

Will Tetra Pak be winners in the low carbon economy?

- Reflections on LCA emissions, producer responsibility and opportunities

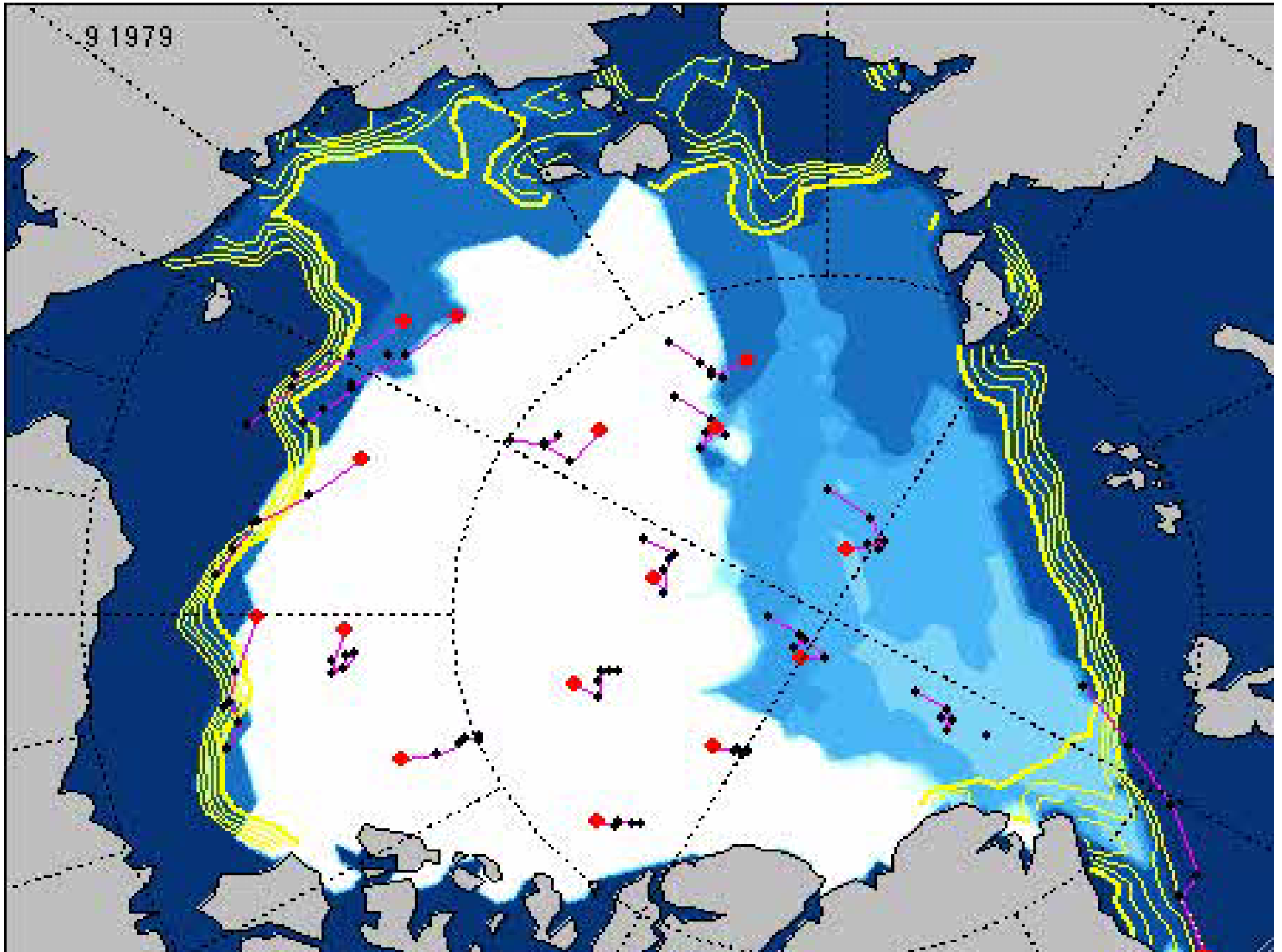
Stefan Henningson

Programme Director Climate Change, WWF Sweden

2009 09 01, Stockholm



9 1979





WWF Green Jobs report 09

3,4 million in EU
employed in:

- Renewable energy
- Climate friendly transport
- Energy efficient goods and services



- Dennis Jönsson, CEO, Tetra Pak

LET THE
CLEAN
ECONOMY
BEGIN

This December, the world's governments will gather in Copenhagen to usher in the New Clean Economy. Climate Savers will be there. These companies are shaping the new reality by combining CO₂ reductions and business growth. By 2010 they will have collectively decreased their CO₂ emissions by 50 million tons while creating competitive advantage and increasing shareholder value. They're proving that climate leadership makes sense – for business and for the planet. Now is the time for the world's governments to lead us further along this path, into a new era. The future is calling, and the world is waiting. Follow the leaders at: panda.org/cleaneconomy



WWF Green Jobs report 09

2,8 million in EU
employed in
high emission
sectors:

- Fossil energy
- Mining
- Cement
- Iron and Steel



Energy Consumption

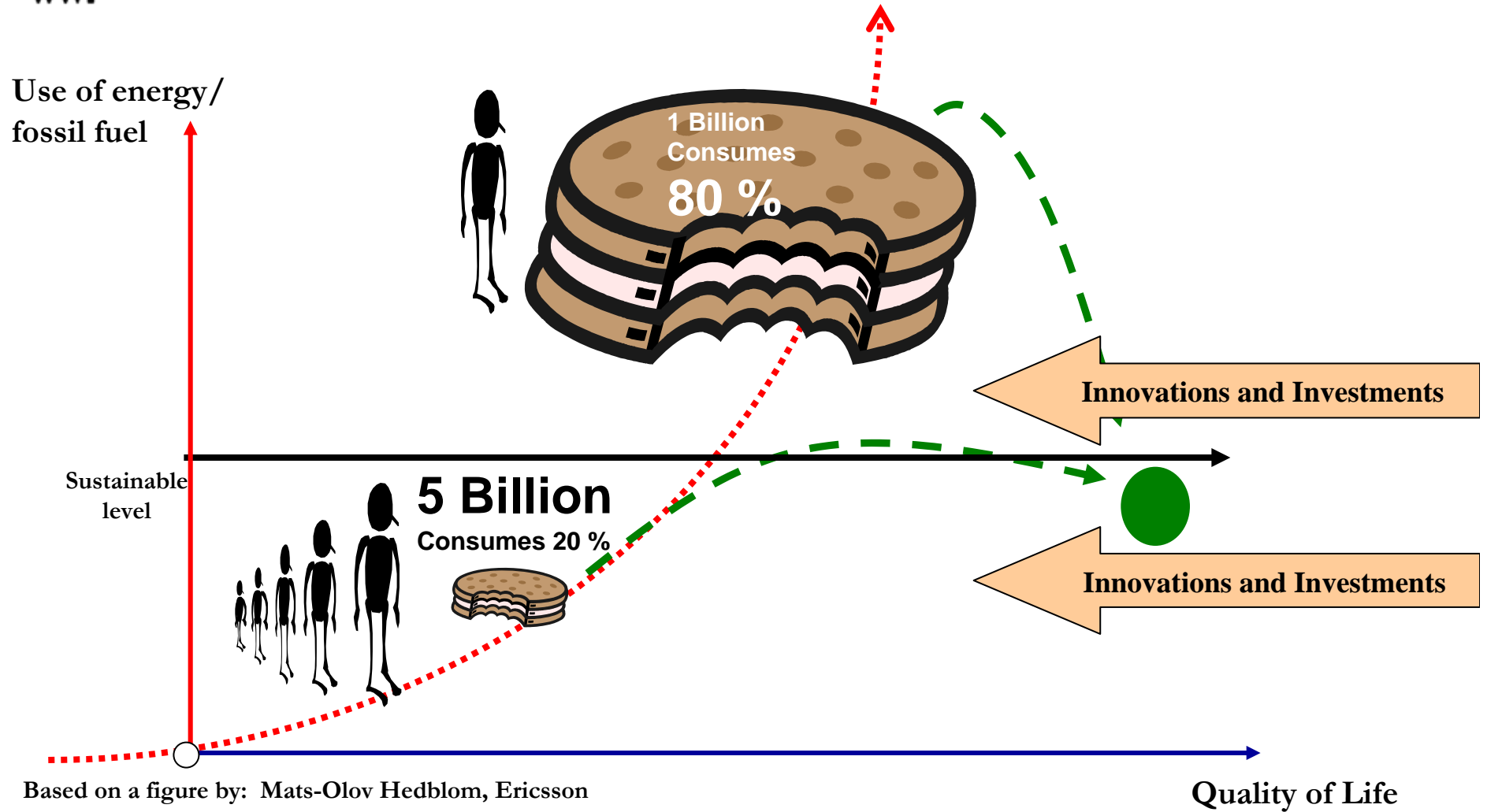
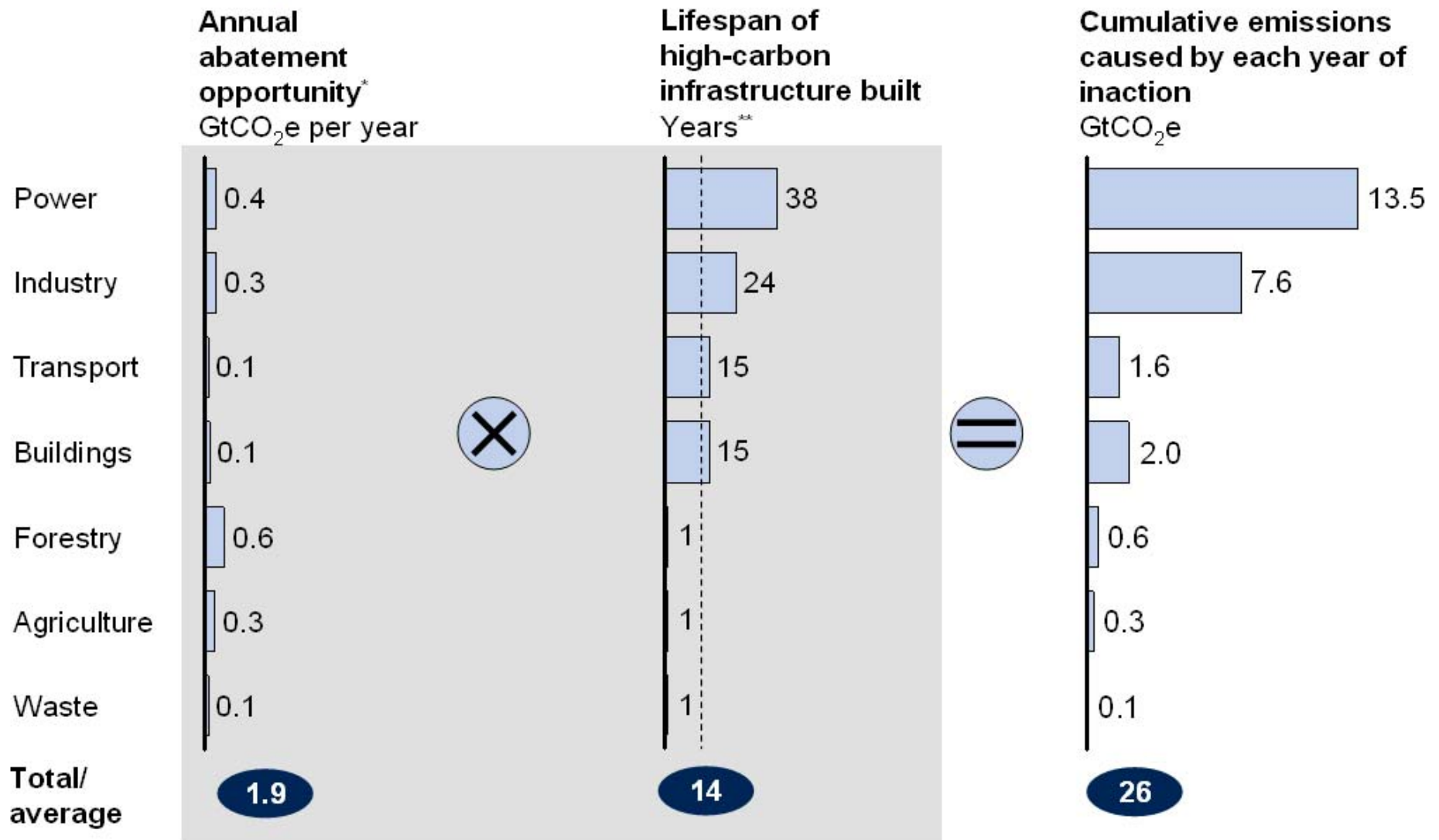


Exhibit 29

Lock-in into high-carbon infrastructure



* Annual between 2010–15; calculated as emission difference between BAU and emissions after abatement.

** Weighted average of lifespan of carbon-intensive assets or infrastructures in each sector.

Source: Global GHG Abatement Cost Curve v2.0



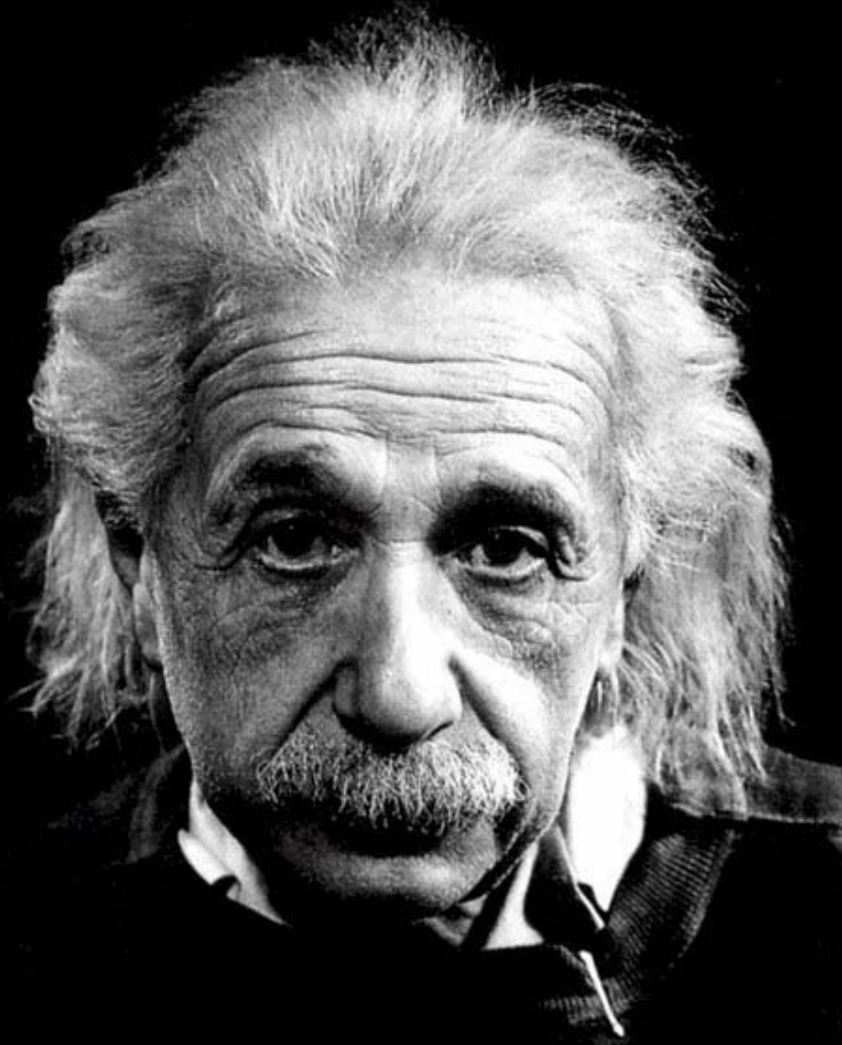
Tetra Pak LCA study - Reflections

- **Currently locked-in - high fossil infrastructure on the Nordic market**
 - Energy mix
 - Waste Management
 - Transport to retail
 - Transport to consumer – "Largest single contributor"
Refrigeration emissions in stores – 6 days at retail = Double life cycle emissions
- **137 billion packaging products per year**
 - Global upscaling of study – Pros and Cons ?
 - Tetra Pak role in growth markets? Nordic as a lead market?



Tetra Pak LCA study - Reflections

- **Transform with and influence societal emissions**
 - From packaging product to food service provider – New clusters
 - Retail refrigeration
 - Home delivery
 - Labelling including content
 - Concentrates
 - Waste to carbon sink ???
- **Search and support new climate entrepreneurs**
- **Lobby for positive life cycle change, eg**
 - Ambitious climate policy on markets = Good for Tetra Pak products
 - "Norwegian energy mix – minimum on all key markets"
 - For ex No new power plants emitting more than 350gCO₂ per kWh, existing from latest 2020
 - "Danish waste management – minimum on all key markets"
 - Strong vehicle emission standards



*'It takes a new way of thinking to solve the problems that we created
by the old way of thinking'*