

INTEGRATE ALL KIND OF EQUIPMENT, NO MATTER WHAT BRAND

Cover your entire operations – from raw material reception to finished packaged and palletized products, with any brand of equipment, and at all of your sites.

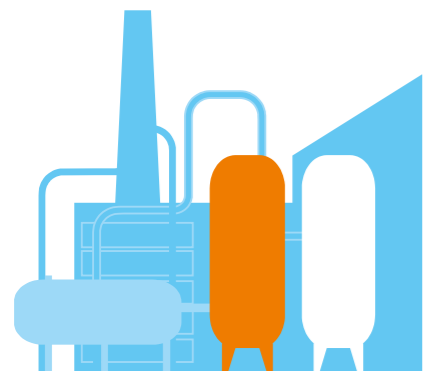
ONE TETRA PAK® PLANTMASTER FOR TOTAL CONTROL AND TOP PERFORMANCE

Take total control of your operations to achieve your top performance with Tetra Pak® PlantMaster – the world’s most advanced plant automation and information solution specifically designed for food production and based on extensive food production knowledge.



CUSTOMIZE FREELY AND BE READY FOR THE FUTURE

- Get a modular and scalable integrated solution
- Customize it with the right modules relevant for you today
- Quickly and easily create new functions for your future needs



REDUCE TIME LOSSES, DOWNTIME AND WASTE TO CUT OPERATIONAL COSTS

You get real-time information on your entire operation, supporting operators to make the right decisions at the right time and eliminating the risk of human error.



FULL END-TO-END TRACEABILITY

Cover the origin of materials, ingredients and processing and packaging routing for complete logging and tracking of all production parameters – for easy compliance with food safety regulations and full transparency throughout the supply chain.



SECURE CONSISTENT PRODUCT QUALITY AND FULL CONTROL OF FOOD SAFETY

- Simplify your quality management with one system for your entire operation
- Replace manual quality reporting with a digitalized system
- Get complete automated control of workflows, operations, process parameters and critical control points in real time



ONE OPEN MES SOFTWARE SOLUTION INTEGRATES WITH THE CLOUD AND ERP SYSTEMS

Seamlessly integrate any equipment or data source into other systems and turn data into insights in reports and dashboards to continuously drive and optimize performance.